



# TOOLS for n Version2 Update Guide

## SOFTWARE LICENSE AGREEMENT

PLEASE READ THIS SOFTWARE LICENSE AGREEMENT (“AGREEMENT”) CAREFULLY BEFORE USING THIS SOFTWARE. YOU ARE ONLY PERMITTED TO USE THIS SOFTWARE PURSUANT TO THE TERMS AND CONDITIONS OF THIS AGREEMENT. THIS AGREEMENT IS BETWEEN YOU (AS AN INDIVIDUAL OR LEGAL ENTITY) AND YAMAHA CORPORATION (“YAMAHA”).

BY DOWNLOADING, INSTALLING, COPYING, OR OTHERWISE USING THIS SOFTWARE YOU ARE AGREEING TO BE BOUND BY THE TERMS OF THIS LICENSE. IF YOU DO NOT AGREE WITH THE TERMS, DO NOT DOWNLOAD, INSTALL, COPY, OR OTHERWISE USE THIS SOFTWARE. IF YOU HAVE DOWNLOADED OR INSTALLED THE SOFTWARE AND DO NOT AGREE TO THE TERMS, PROMPTLY DELETE THE SOFTWARE.

### 1. GRANT OF LICENSE AND COPYRIGHT

Yamaha hereby grants you the right to use one copy of the software program(s) and data (“SOFTWARE”) accompanying this Agreement. The term SOFTWARE shall encompass any updates to the accompanying software and data. The SOFTWARE is owned by Yamaha and/or Yamaha’s licensor(s), and is protected by relevant copyright laws and all applicable treaty provisions. While you are entitled to claim ownership of the data created with the use of SOFTWARE, the SOFTWARE will continue to be protected under relevant copyrights.

- **You may** use the SOFTWARE on a **single computer**
- **You may** make one copy of the SOFTWARE in machine-readable form for backup purposes only, if the SOFTWARE is on media where such backup copy is permitted. On the backup copy, you must reproduce Yamaha’s copyright notice and any other proprietary legends that were on the original copy of the SOFTWARE.
- **You may** permanently transfer to a third party all your rights in the SOFTWARE, provided that you do not retain any copies and the recipient reads and agrees to the terms of this Agreement.

### 2. RESTRICTIONS

- **You may not** engage in reverse engineering, disassembly, decompilation or otherwise deriving a source code form of the SOFTWARE by any method whatsoever.
- **You may not** reproduce, modify, change, rent, lease, or distribute the SOFTWARE in whole or in part, or create derivative works of the SOFTWARE.
- **You may not** electronically transmit the SOFTWARE from one computer to another or share the SOFTWARE in a network with other computers.
- **You may not** use the SOFTWARE to distribute illegal data or data that violates public policy.
- **You may not** initiate services based on the use of the SOFTWARE without permission by Yamaha Corporation.
- Copyrighted data, including but not limited to MIDI data for songs, obtained by means of the SOFTWARE, are subject to the following restrictions which you must observe.

- Data received by means of the SOFTWARE may not be used for any commercial purposes without permission of the copyright owner.
- Data received by means of the SOFTWARE may not be duplicated, transferred, or distributed, or played back or performed for listeners in public without permission of the copyright owner.
- The encryption of data received by means of the SOFTWARE may not be removed nor may the electronic watermark be modified without permission of the copyright owner.

### 3. TERMINATION

This Agreement becomes effective on the day that you receive the SOFTWARE and remains effective until terminated. If any copyright law or provisions of this Agreement is violated, the Agreement shall terminate automatically and immediately without notice from Yamaha. Upon such termination, you must immediately destroy the licensed SOFTWARE, any accompanying written documents and all copies thereof.

### 4. DISCLAIMER OF WARRANTY ON SOFTWARE

You expressly acknowledge and agree that use of the SOFTWARE is at your sole risk. The SOFTWARE and related documentation are provided “AS IS” and without warranty of any kind. NOTWITHSTANDING ANY OTHER PROVISION OF THIS AGREEMENT, YAMAHA EXPRESSLY DISCLAIMS ALL WARRANTIES AS TO THE SOFTWARE, EXPRESS, AND IMPLIED, INCLUDING BUT NOT LIMITED TO THE IMPLIED WARRANTIES OF MERCHANTABILITY, FITNESS FOR A PARTICULAR PURPOSE AND NONINFRINGEMENT OF THIRD PARTY RIGHTS. SPECIFICALLY, BUT WITHOUT LIMITING THE FOREGOING, YAMAHA DOES NOT WARRANT THAT THE SOFTWARE WILL MEET YOUR REQUIREMENTS, THAT THE OPERATION OF THE SOFTWARE WILL BE UNINTERRUPTED OR ERROR-FREE, OR THAT DEFECTS IN THE SOFTWARE WILL BE CORRECTED.

## 5. LIMITATION OF LIABILITY

YAMAHA'S ENTIRE OBLIGATION HEREUNDER SHALL BE TO PERMIT USE OF THE SOFTWARE UNDER THE TERMS HEREOF. IN NO EVENT SHALL YAMAHA BE LIABLE TO YOU OR ANY OTHER PERSON FOR ANY DAMAGES, INCLUDING, WITHOUT LIMITATION, ANY DIRECT, INDIRECT, INCIDENTAL OR CONSEQUENTIAL DAMAGES, EXPENSES, LOST PROFITS, LOST DATA OR OTHER DAMAGES ARISING OUT OF THE USE, MISUSE OR INABILITY TO USE THE SOFTWARE, EVEN IF YAMAHA OR AN AUTHORIZED DEALER HAS BEEN ADVISED OF THE POSSIBILITY OF SUCH DAMAGES. In no event shall Yamaha's total liability to you for all damages, losses and causes of action (whether in contract, tort or otherwise) exceed the amount paid for the SOFTWARE.

## 6. THIRD PARTY SOFTWARE

Third party software and data ("THIRD PARTY SOFTWARE") may be attached to the SOFTWARE. If, in the written materials or the electronic data accompanying the Software, Yamaha identifies any software and data as THIRD PARTY SOFTWARE, you acknowledge and agree that you must abide by the provisions of any Agreement provided with the THIRD PARTY SOFTWARE and that the party providing the THIRD PARTY SOFTWARE is responsible for any warranty or liability related to or arising from the THIRD PARTY SOFTWARE. Yamaha is not responsible in any way for the THIRD PARTY SOFTWARE or your use thereof.

- Yamaha provides no express warranties as to the THIRD PARTY SOFTWARE. IN ADDITION, YAMAHA EXPRESSLY DISCLAIMS ALL IMPLIED WARRANTIES, INCLUDING BUT NOT LIMITED TO THE IMPLIED WARRANTIES OF MERCHANTABILITY AND FITNESS FOR A PARTICULAR PURPOSE, as to the THIRD PARTY SOFTWARE.
- Yamaha shall not provide you with any service or maintenance as to the THIRD PARTY SOFTWARE.
- Yamaha is not liable to you or any other person for any damages, including, without limitation, any direct, indirect, incidental or consequential damages, expenses, lost profits, lost data or other damages arising out of the use, misuse or inability to use the THIRD PARTY SOFTWARE.

## 7. GENERAL

This Agreement shall be interpreted according to and governed by Japanese law without reference to principles of conflict of laws. Any dispute or procedure shall be heard before the Tokyo District Court in Japan. If for any reason a court of competent jurisdiction finds any portion of this Agreement to be unenforceable, the remainder of this Agreement shall continue in full force and effect.

## 8. COMPLETE AGREEMENT

This Agreement constitutes the entire agreement between the parties with respect to use of the SOFTWARE and any accompanying written materials and supersedes all prior or contemporaneous understandings or agreements, written or oral, regarding the subject matter of this Agreement. No amendment or revision of this Agreement will be binding unless in writing and signed by a fully authorized representative of Yamaha.

# Information

- The software and this Update Guide are the exclusive copyrights of Yamaha Corporation.
- Please read carefully the Software Licensing Agreement at the front of this Update Guide before installing the software.
- Copying of the software or reproduction of this Update Guide in whole or in part by any means is expressly forbidden without the written consent of the manufacturer.
- Yamaha makes no representations or warranties with regard to the use of the software and documentation and cannot be held responsible for the results of the use of this Update Guide and the software.
- Future upgrades of application and system software and any changes in specifications and functions will be announced at the following website.  
<http://download.yamaha.com/>
- The screen displays as illustrated in this Update Guide are for instructional purposes, and may appear somewhat different from the screens which appear on your computer.
- Copying of the commercially available musical data including but not limited to MIDI data and/or audio data is strictly prohibited except for your personal use.
- Steinberg and Cubase are the registered trademarks of Steinberg Media Technologies GmbH.
- Windows is the registered trademark of Microsoft ® Corporation.
- FireWire and the FireWire symbol are trademarks of Apple, Inc., registered in the U.S. and other countries.
- Apple, Mac and Macintosh are trademarks of Apple Inc., registered in the U.S. and other countries.
- The company names and product names in this Update Guide are the trademarks or registered trademarks of their respective companies.

# What is TOOLS for n Version2?

TOOLS for n Version2 consists of two software components: Yamaha Steinberg FW Driver and n Extension. Yamaha Steinberg FW Driver enables audio/MIDI signals to be transferred between a computer and the n8/n12 via IEEE1394 cables. Using n Extension, you can link the n8/n12 with Cubase versions that support the Link functions between both of them. The TOOLS for n Version2 Installer installs these two software components.

## Main Changes from TOOLS for n

- The driver included in this software has been changed from AI Driver to Yamaha Steinberg FW Driver.
- The structure of the installer for Extensions has been changed. This new version installs only Extension for n while the previous version (Yamaha Extensions for Steinberg DAW) installed Extension for the multiple different models such as n and MOTIF XS together. (For Windows, make sure to uninstall Extensions installed via the previous version before installing TOOLS for n Version2.)

## Features of Yamaha Steinberg FW Driver

- Unlike the previous version, you need not to perform the on/off setting for the driver (Windows) or Connection Manager (for Mac), resulting in smoother and quicker use.
- You can change the sample rate directly from DAW software such as Cubase.
- Basically, up to three devices compatible with the Yamaha Steinberg FW Driver can be connected in daisy-chain fashion to a computer. However, please note, that only up to two devices can be connected if their Sampling Rates are set to 88.2kHz/96kHz or if you use the MOTIF XS/XF series and MOTIF-RACK XS.

TOOLS for n Version2 requires the following software components.

n8/n12 firmware	V1.03 or later
IEEE1394 firmware	V1.07 or later
Sweet Spot Data Manager	V2.0.0 or later

For details on Cubase versions that support the Link functions, refer to the release notes.

This Update Guide covers also the information about the instructions on updating these software components.

### Important

After updating the n8/n12 firmware, the n8/n12 will not be able to be used with the n Driver, AI Driver or mLAN Driver/mLAN Tools. Also keep in mind that the previous firmware version of the n8/n12 cannot be restored.

When installing TOOLS for n Version2 for the first time, download the following software components and relevant manuals from Yamaha website before starting the update procedure.

n8/n12 firmware Updater	V1.03 or later
IEEE1394 firmware Updater	V1.07 or later
Sweet Spot Data Manager	V2.0.0 or later
TOOLS for n Version2/Cubase AI Installation Guide	
n8/n12 Owner's Manual (Supporting TOOLS for n Version2)	

<http://download.yamaha.com/>

### NOTE

- If the included CD-ROM is "TOOLS for n Version2," you do not need to update the n8/n12 Firmware and the IEEE1394 Firmware. (The n8/n12 will already have been updated to the required version of the firmware when you install TOOLS for n Version2.)
- The install and uninstall procedures for Windows 7/Windows 8 are the same as Windows Vista.
- Follow the steps below to access the Control Panel on Windows 8.
  - 1) In the Start screen, click [Desktop].  
The desktop will appear.
  - 2) Move the cursor to the upper right or lower right corner of the desktop.  
The Charms bar will appear.
  - 3) Select [Settings] → [Control Panel].

# Software Installation

## When you are using the TOOLS for n Version2

Follow the instructions below.

### NOTE

- If the old version of the TOOLS for n Version2 has been installed on your computer, the software should be updated with the same procedure.
- If you don't have the TOOLS for n Version2/Cubase AI Installation Guide, you can download the corresponding PDF file from the Yamaha website.

## Windows

The installation procedure of TOOLS for n Version2 is same as that described in the Installation Guide of "TOOLS for n Version2/Cubase AI". For installation instructions, refer to the TOOLS for n Version2/Cubase AI Installation Guide. When performing installation, make sure to double-click "setup.exe" in the compressed file you obtained by downloading instead of the file having the same name in the CD-ROM.

## Mac

- [1] Install TOOLS for n Version2
- [2] Turn on the power to the n8/n12
- [3] Confirm whether or not installation is completed successfully

### [1] Install TOOLS for n Version2

- 1** Make sure that the power to the n8/n12 is turned off.
- 2** Using an IEEE1394 (FireWire) cable, connect the n8/n12 directly to the computer (without using a hub), and disconnect all other IEEE1394 devices from the computer.
- 3** Start the computer and log in to the Administrator account.  
Exit any open applications and close all open windows.
- 4** After the downloaded compressed file is properly extracted, double-click the file "TOOLS for n V\*\*\*.pkg"  
\*\*\* represents the version number.
- 5** Follow the on-screen instructions to install the software.
- 6** When installation has been completed, click [Restart] to restart the computer.

### [2] Turn on the power to the n8/n12

### [3] Confirm whether or not installation is completed successfully

- 1** Open the "Audio MIDI Setup" window as follows.  
[Macintosh HD] → [Applications] → [Utilities] → [Audio MIDI Setup]

- 2** Confirm that the device name is listed in the following.

#### Mac OS X 10.5:

In "Properties For:"

#### Mac OS X 10.6/10.7/10.8:

In the left column

# When installing TOOLS for n Version2 for the first time

Follow the instructions below.

## Windows

- [1] Uninstall n Driver, AI Driver or mLAN Driver/mLAN Tools and Extensions for Steinberg DAW (32-bit version only)
- [2] Install TOOLS for n Version2
- [3] Connect the n8/n12 to the computer, then turn on the power to the device
- [4] Update IEEE1394 firmware
- [5] Update n8/n12 firmware
- [6] Make the initial setup for the n series Driver and WDM Audio/MIDI Driver. (Windows XP only)
- [7] Confirm whether or not installation is completed successfully
- [8] Update Sweet Spot Data Manager

### [1] Uninstall n Driver, AI Driver or mLAN Driver/mLAN Tools and Extensions for Steinberg DAW (32-bit version only)

If these software are installed to your computer, follow the instructions below to uninstall them. If they are necessary for data communication with the devices other than the n8/n12, you can maintain the mLAN Driver/mLAN Tools in your computer.

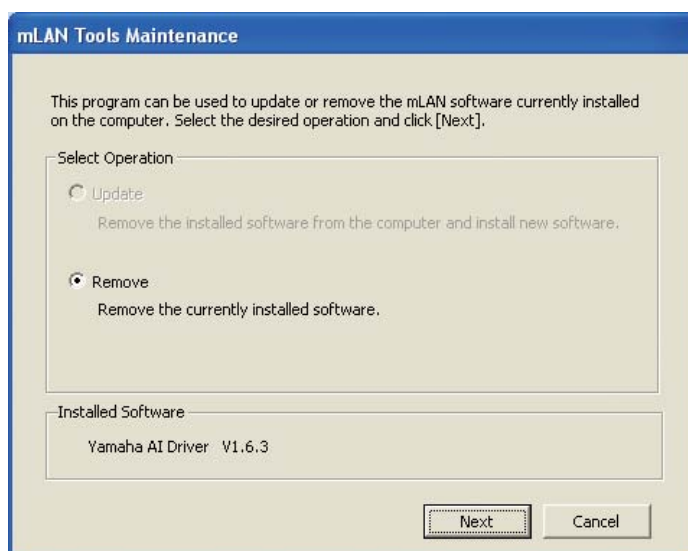
#### NOTE

**Please note the following points if you maintain the mLAN Driver/mLAN Tools in the computer**

- If you are using mLAN Driver/mLAN Tools V1.6.2, update them to V1.6.3 (or higher) before installing TOOLS for n Version2. This is necessary because the Yamaha Steinberg FW Driver cannot work properly with the mLAN Driver/mLAN Tools V1.6.2 installed.
- When using Yamaha Steinberg FW Driver, make sure to disable the mLAN Driver. If this is enabled (on), Yamaha Steinberg FW Driver cannot work because the mLAN Driver uses the IEEE1394 interface. When using the mLAN Driver, make sure to turn off any devices compatible with Yamaha Steinberg FW Driver or disconnect them from the computer before enabling the mLAN driver. Note that you may not need to disable the mLAN driver when the computer is equipped with multiple IEEE1394 interfaces and a device compatible with Yamaha Steinberg FW driver is connected to the different IEEE1394 interface from the other used by the mLAN driver.

### Uninstalling n Driver, AI Driver or mLAN Driver/mLAN Tools

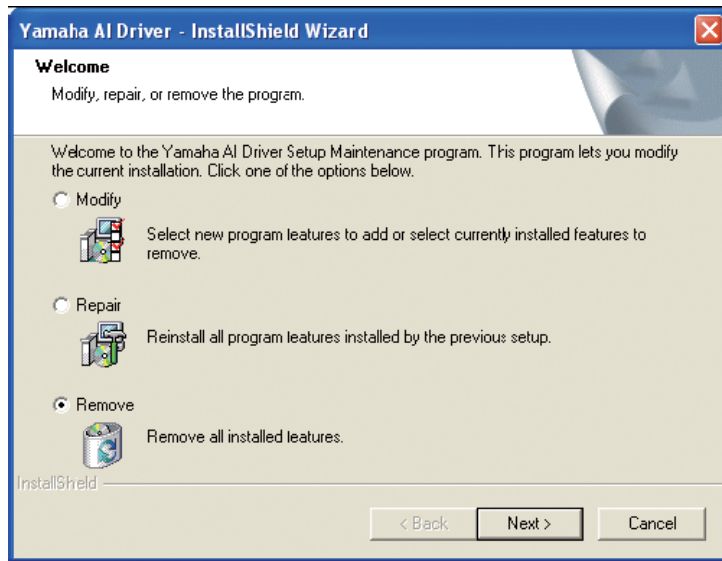
- 1** Extract the file you downloaded, open the “Uninstall\_mLAN” folder, then double-click the “setup.exe” file. The maintenance window appears.



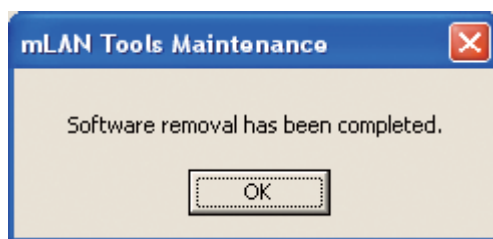
#### NOTE

- If you are using Windows Vista, the “User Account Control” window may appear. Click [Continue]. The maintenance window will appear.
- The “Cannot find the installer” window appears if the n Driver, AI Driver or mLAN Driver/mLAN Tools are not installed to the computer.

- 2 Make sure that the radio button to the left of “Remove” is selected, then click [Next].
- 3 A message “Remove (A name of software installed)” appears. Click [Next].
- 4 The “Welcome...” window appears. Check the radio button to the left of “Remove,” then click [Next].



- 5 Confirmation regarding removal of the file appears. Click [OK].  
The maintenance operation starts.
- 6 The window appears indicating that the maintenance operation is complete. Click [Finish].
- 7 The message “Remove mLAN Tools 2.0” appears. click [Next].
- 8 Confirmation regarding removal of the file appears. Click [OK].  
The maintenance operation starts.
- 9 A window appears indicating that the maintenance operation is complete. Click [Finish].
- 10 A dialog box indicating that “Software removal has been completed” appears. Click [OK].  
The uninstallation of n Driver, AI Driver or mLAN Driver/mLAN Tools is complete.



#### NOTE

- You can also uninstall the software by using “Add or Remove Programs” or “Programs and Features” in the Windows Control Panel. In the same manner as described below for removing Extensions for Steinberg DAW, remove the following two software programs in the listed order.  
(Be sure to remove software 1, then software 2.)
  - 1) Yamaha n Driver, Yamaha AI Driver or mLANApplications for Yamaha
  - 2) mLAN Tools 2.0

## Uninstalling Extensions for Steinberg DAW

---

### ■ Windows XP:

- 1** From the Start menu, select ([Settings] →) [ControlPanel] → [Add or Remove Programs] to display the Add or Remove Programs panel.
- 2** Click “Change or Remove Programs” located in the upper left, then select “Yamaha Extensions for Steinberg DAW” from the list in the right pane.
- 3** To uninstall the software, click [Remove].  
A dialog box appears. Follow the instructions to remove the software.

### ■ Windows Vista:

- 1** From the Start menu, select ([Settings] →) [ControlPanel] → [Programs and Features] to display the “Uninstall or change a program” window.
- 2** Select “Extensions for Steinberg DAW” from the list.
- 3** Click [Uninstall].  
If the “User Account Control” window appears, click [Continue]. A dialog box appears. Follow the instructions to remove the software.

## [2] Install TOOLS for n Version2

For details, refer to the TOOLS for n Version2/Cubase AI Installation Guide. The installation procedure is the same as that applicable when installing this software by using the “TOOLS for n Version2” CD-ROM. When you start installation, make sure to double-click “setup.exe” in the compressed file (you have downloaded) instead of the CD-ROM.

### NOTE

- On Windows XP, executing this procedure will take you up to step 15 (page 7) in the TOOLS for n Version2/Cubase AI Installation Guide. After completing the procedure, continue the update steps following step [3] “Connect the n8/n12 to the computer, then turn on the power to the device” in this Update Guide.

## [3] Connect the n8/n12 to the computer, then turn on the power to the device

### NOTE

- If you connect the n8/n12 to the computer with Windows XP for the first time, the “Found New Hardware Wizard” window appears. Select the radio button next to “Install the software automatically [Recommended],” then click [Next]. When the message of the installation completion is displayed, click [Finish].
- A dialog box may appear asking you whether you wish to connect to Windows Update. In this case, select the radio button to the left of “Not at this time,” then click [Next].

## [4] Update IEEE1394 firmware

For details, refer to the Update Guide included in the IEEE1394 Firmware Updater.

## [5] Update n8/n12 firmware

For details, refer to the Update Guide included in the n8/n12 Firmware Updater.



## **[6] Make the initial setup for the n series Driver and WDM Audio/MIDI Driver. (Windows XP only)**

The “Found New Hardware Wizard” windows appear when the update of the n8/n12 firmware has been completed. Complete each of the Wizards by following the instructions after No.16 in the TOOLS for n Version2/Cubase AI Installation Guide (page 7).

### **NOTE**

- If the installation wizard window appears, select the radio button next to “Install the software automatically [Recommended],” then click [Next]. When the message of the installation completion is displayed, click [Finish].
- A dialog box may appear asking you whether you wish to connect to Windows Update. In this case, select the radio button to the left of “Not at this time,” then click [Next].
- If you are using Windows Vista, the initial settings are automatically done.

## **[7] Confirm whether or not installation is completed successfully**

For details, refer to the TOOLS for n Version2/Cubase AI Installation Guide.

## **[8] Update Sweet Spot Data Manager**

For details, refer to the Installation Guide included in the Sweet Spot Data Manager.

## **Mac**

---

- [1] Install TOOLS for n Version2
- [2] Turn on the power to the n8/n12
- [3] Update IEEE1394 firmware
- [4] Update n8/n12 firmware
- [5] Confirm whether or not installation is completed successfully
- [6] Update Sweet Spot Data Manager

### **[1] Install TOOLS for n Version2**

For details, refer to the section “ [1] Install TOOLS for n Version2 ” ([page 4](#)).

### **[2] Turn on the power to the n8/n12**

### **[3] Update IEEE1394 firmware**

For details, refer to the Update Guide included in the IEEE1394 Firmware Updater.

### **[4] Update n8/n12 firmware**

For details, refer to the Update Guide included in the n8/n12 Firmware Updater.

### **[5] Confirm whether or not installation is completed successfully**

For details, refer to the section “ [3] Confirm whether or not installation is completed successfully” ([page 4](#)).



## [6] Update Sweet Spot Data Manager

For details, refer to the Installation Guide included in the Sweet Spot Data Manager.

### NOTE

- If you do not use AI Driver or mLAN Driver/mLAN Tools in other devices, you can uninstall it by the following methods.  
To uninstall AI Driver or mLAN Driver/mLAN Tools, you must remove the following folders and files from the boot disk (usually Macintosh HD).

```
/Applications/mLAN Tools/  
/System/Library/Extensions/Yamaha1394AudioDriver.kext  
/System/Library/Extensions/YamahaOGTAsync.kext  
/System/Library/Frameworks/mLANEnablerFramework.framework  
/System/Library/Frameworks/mLANQt.framework or mLANQtFramework.framework  
/Library/Application Support/mLAN/  
/Library/Audio/MIDI Drivers/Yamaha1394MIDI.plugin  
/Library/Preferences/com.yamaha.mLAN Manager.plist  
/Library/Receipts/01XHAL.pkg  
/Library/Receipts/1394AudioDriver.pkg  
/Library/Receipts/1394MIDIPlugIn.pkg  
/Library/Receipts/i88XHAL.pkg  
/Library/Receipts/NCP08HAL.pkg  
/Library/Receipts/mLAN16EHAL.pkg  
/Library/Receipts/mLANAsyncLibrary.pkg  
/Library/Receipts/mLANAutoConnector.pkg  
/Library/Receipts/mLANEnablerFramework.pkg  
/Library/Receipts/mLANGraphicPatchbay.pkg  
/Library/Receipts/mLANManager.pkg  
/Library/Receipts/mLANQt.pkg  
/Library/Receipts/MY16mLANHAL.pkg  
/Library/Receipts/Presets.pkg  
/Library/Receipts/YamahaAIDriverHAL.pkg  
/User/ (Account name) /mLAN/  
/ User/ (Account name) /Library/Preferences/com.yamaha.autoconnector.plist  
/ User/ (Account name) /Library/Preferences/com.yamaha.mLAN.GraphicPatchbay.plist  
/ User/ (Account name) /Library/Preferences/com.yamaha.mLAN Manager.plist  
* “(Account name)” indicates the account name when AI Driver or mLAN Driver/mLAN Tools is installed.
```

# Uninstalling the Software

You must remove the following software one by one.

- Yamaha Steinberg FW Driver
- n Extension

## Windows

---

For details, refer to the TOOLS for n Version2/Cubase AI Installation guide to uninstall the software.

## Mac

---

**[1] Disconnect all IEEE1394 devices from the computer.**

**[2] Start the computer and log in to the Administrator account.**

Exit any open applications and close all open windows.

**[3] After the downloaded compressed file is properly extracted, double-click the following files.**

### Yamaha Steinberg FW Driver

- Uninstall Yamaha Steinberg FW Driver

### n Extension

- Uninstall Yamaha n Extension

**[4] Click [Run] when the “Welcome to the \*\*\* uninstaller.” window appears.**

\*\*\* represents the software name.

After that, follow the on-screen instructions to uninstall the software.

**[5] After completing the uninstallation, an “Uninstallation completed” window appears.**

**Click [Restart] or [Close].**

**[6] (Yamaha Steinberg FW Driver Only)**

**When the message prompting you to restart your computer appears, click [Restart].**