

KX Editor Owner's Manual

Contents

What is the KX Editor?	2
Data structure of the KX Editor	2
Operation flow from starting the application to closing it.....	3
Using the Preset Control Templates.....	6
KX Editor Window.....	7
Menu	10
Troubleshooting	12

Special Notices

- Copying of the commercially available music sequence data and/or digital audio files is strictly prohibited except for your personal use.
- The software and this owner's manual are exclusive copyrights of Yamaha Corporation.
- Copying of the software or reproduction of this manual in whole or in part by any means is expressly forbidden without the written consent of the manufacturer.
- Yamaha makes no representations or warranties with regard to the use of the software and documentation and cannot be held responsible for the results of the use of this manual and the software.
- The screen displays as illustrated in this Owner's Manual are for instructional purposes, and may appear somewhat different from the screens which appear on your computer.
- Steinberg and Cubase are the registered trademarks of Steinberg Media Technologies GmbH.
- The company names and product names in this Owner's Manual are the trademarks or registered trademarks of their respective companies.

This owner's manual assumes that you are already familiar with basic Windows/Macintosh operations. If you are not, please refer to the owner's manual which came with your Windows/Macintosh software before using the KX Editor.

For information about hardware requirements, the interconnection of devices and the installation of the KX Editor software, refer to the separate Installation Manual as well as the Owner's Manual for the respective MIDI device.

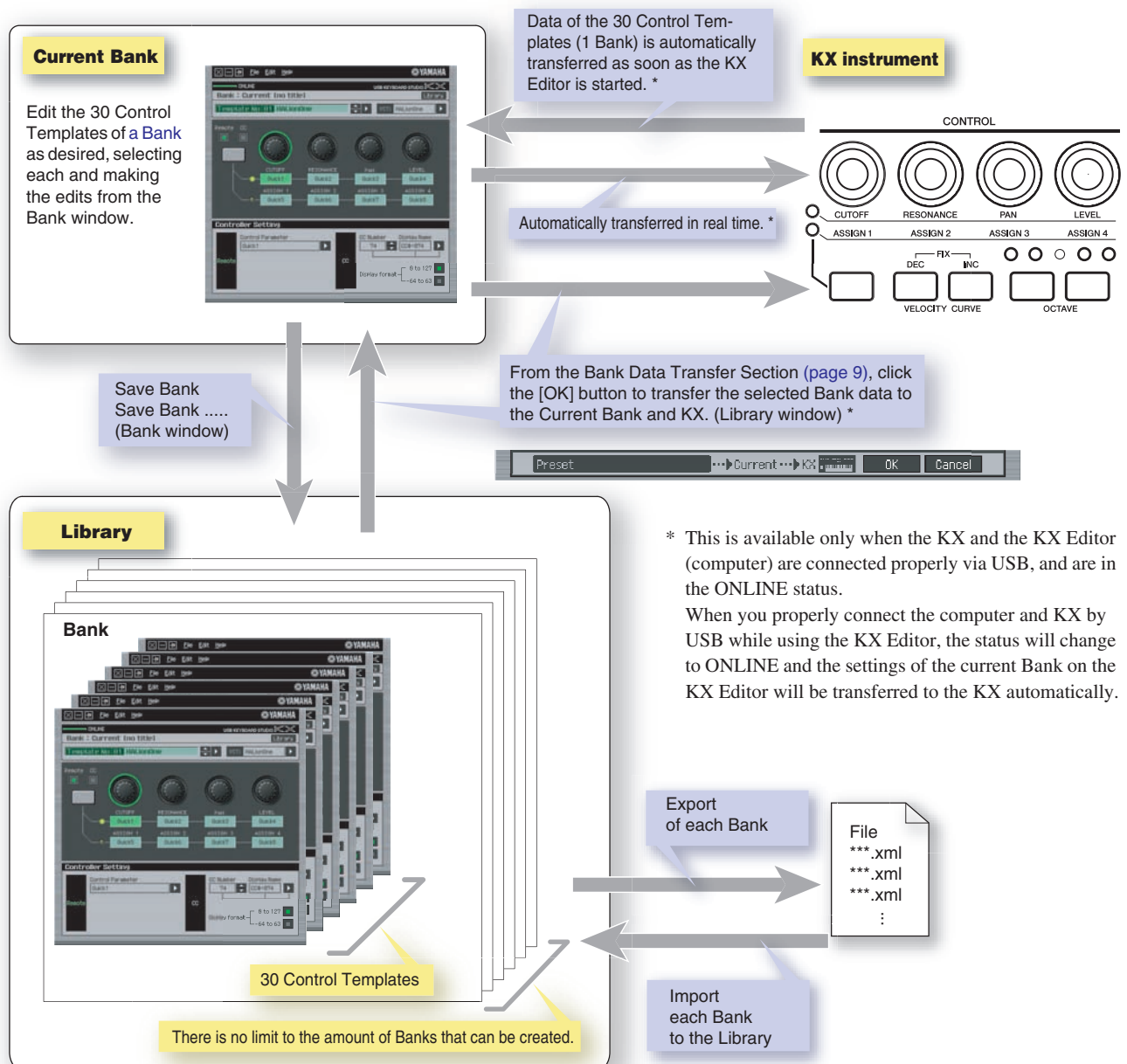
What is the KX Editor?

KX Editor is a convenient tool which lets you edit/create Control Templates for the KX USB Keyboard Studio. These Control Templates let you assign the appropriate functions for your favorite VSTi to the CONTROL knobs on the KX. While the KX handles up to 30 Control Templates (in a single Bank), the KX Editor can be used to create and organize multiple Banks, each of which contain 30 Control Templates. Data of a single Bank containing 30 Control Templates created on the KX Editor can be transferred from the computer to the KX and saved to the computer as a single file (.xml).

Data structure of the KX Editor

Within the KX Editor, you can select a Bank then edit each one of the 30 Control Template contained in the selected Bank. After finishing your edits of the selected Bank (called “Current Bank”), save the Bank data to the Library by using the “Save Bank” or “Save Bank As...” menu. The Bank data saved to the Library can be recalled when starting the KX Editor next time. If you want to archive the Bank data, save it as a single file (extension: xml) to the computer by using the “Export” menu.

Refer to the illustration below to understand the data structure of the KX Editor.



* This is available only when the KX and the KX Editor (computer) are connected properly via USB, and are in the ONLINE status.

When you properly connect the computer and KX by USB while using the KX Editor, the status will change to ONLINE and the settings of the current Bank on the KX Editor will be transferred to the KX automatically.

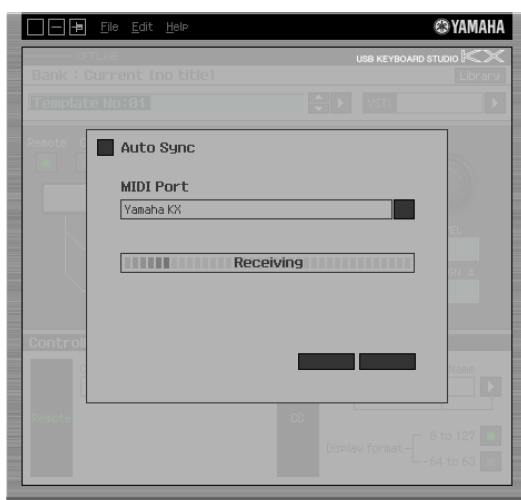
Operation flow from starting the application to closing it

After installing the KX Editor and related applications by following the Installation Guide of the KX Editor, follow the instructions below. Before starting, make sure that the KX is properly connected to the computer via a USB cable. There is no single way to use the many components in the KX Editor. Your editing needs and preferences may differ; however, the following example gives you a simple step-by-step guide in how to use the KX Editor.

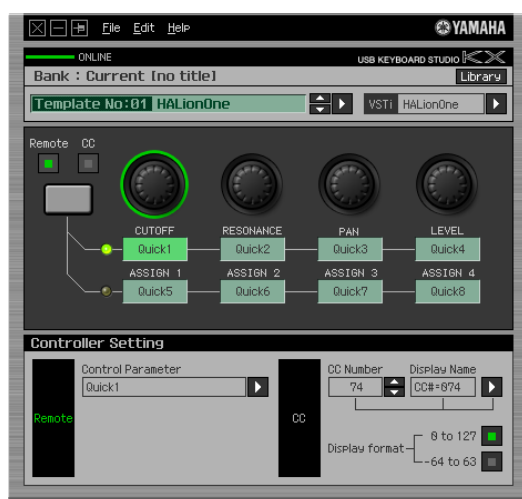
NOTE After completing installation of the KX Editor, start the DAW software once then quit it. This operation is necessary to scan through the DAW software for obtaining the VSTi-related information. Only DAW software produced by Steinberg (such as Cubase) can be scanned.

1 Start the KX Editor by selecting [Start] → All Programs → [Yamaha KX] → [KX Editor].

The Auto Sync window appears and the settings of the 30 Control Templates on the KX are transferred automatically to the Current Bank (page 7) of the KX Editor.



After transfer has been successfully completed, the Bank window appears.



NOTE If data transfer in the Auto Sync window fails even when the KX and computer are connected properly, make sure to set the MIDI Select parameter to “USB” and the Device Number parameter to “1” or “All” in the Utility display on the KX.

- 2 Select “Setup” from the [File] menu to call up the following window.

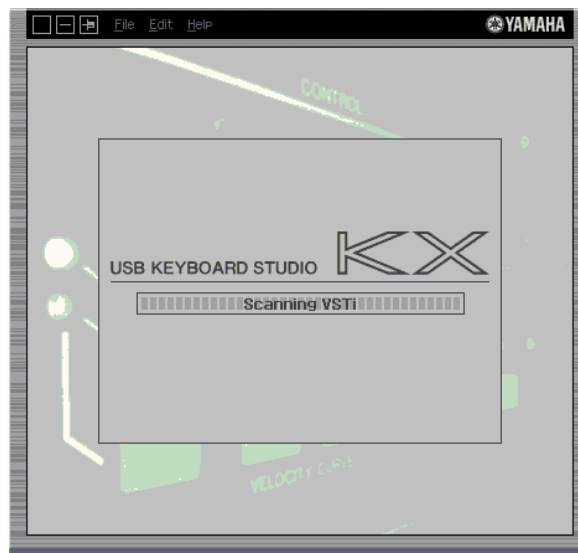


- 3 Confirm that the MIDI Port is set to “Yamaha KX,” then select the desired DAW software from the DAW Select column.

If the KX and the KX Editor are connected properly via USB, you can confirm that the MIDI Port is set to “Yamaha KX” when the above window appears. The DAW selection is necessary for performing the Scan operation (“VSTi Database” menu in the [File] menu) and obtaining the VSTi-related information.

- 4 Click [OK] to start the Scan operation.

The VSTi plug-ins registered to the specified DAW software will be scanned and the information necessary for editing will be obtained.



After the scanning is completed, the previous display will appear. The setup of the KX Editor is finished.

NOTE If the VSTi scanning is not performed when you click [OK] in step 4, select [File] → [VSTi Database] → [Full Scan] to execute scanning.

- 5 Start the DAW software (for example, Cubase).

6 Select the Control Template on the Library window, then edit the selected Control Template on the Bank window.

Perform the editing referring to the “KX Editor Window (page 7)” and “Menu (page 10).” When the ONLINE status is turned on (when the KX and the KX Editor are connected properly via USB), setting the parameters on the KX Editor affects the settings of the same parameters on the KX in real time. This gives you a convenient and useful way to edit while actually controlling the VSTi.

- **Editing the current Control Templates on the KX**

When you start the KX Editor, the Control Templates on the KX are automatically transferred to the KX Editor. Edit them from the Bank window.

- **Editing an existing bank**

From the Library window, select the desired bank as a starting point for your edits, then click [File] → [New Bank] to create a new bank, and finally click [OK] in the Bank Data Transfer section (page 9). The selected bank is transferred to the current bank as well as to the KX and the Bank window is automatically called up. Edit the bank from the Bank window.

- **Creating a new Control Template from scratch**

On the Library window, select [File] → [New Bank] to create a new bank, then click [OK] in the Bank Data Transfer section (page 9). A bank containing default settings are transferred to the current bank as well as to the KX and the Bank window is automatically called up. Edit the bank from the Bank window. You will also need to enter a Bank name and Template name.

7 After your editing session is finished, select [File] → [Save Bank] (or [Save Bank As...]) to save the bank to the Library.

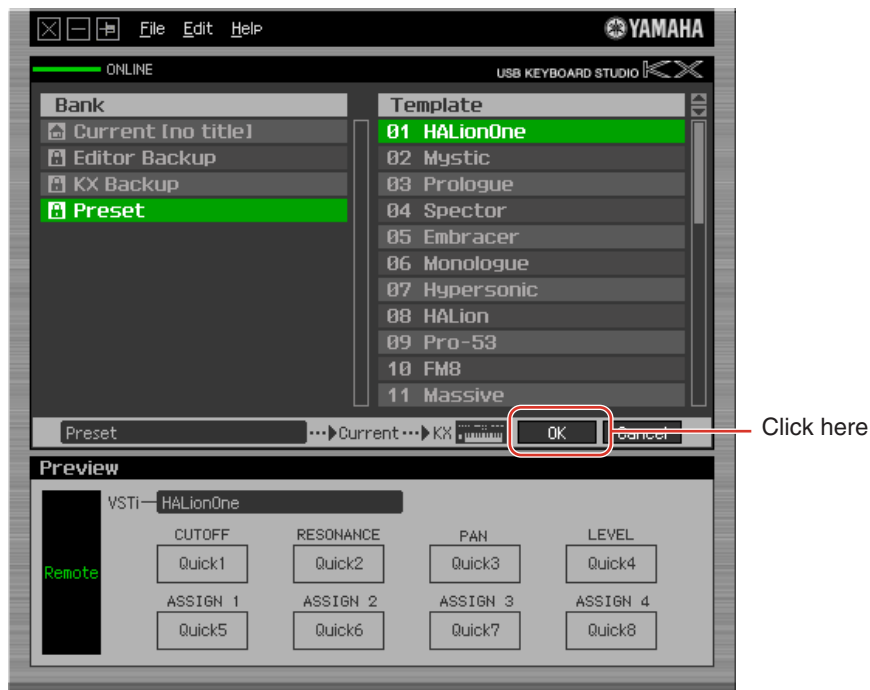
8 Click “X” at the top left corner to quit the KX Editor.

If the edited Bank data has not been saved yet, messages appear prompting you to save it. Enter the bank name and click [Yes] to quit the KX Editor.

Using the Preset Control Templates

The KX contains 30 built-in, pre-programmed Control Templates. These templates correspond to the latest VSTi plug-in software (including beta version software) at the time of shipping. However, since many VSTi are constantly updated, the Control Templates on the KX may not control certain VSTi's properly. To avoid this problem, you will need to use the latest Control Templates equipped in the KX Editor instead of those pre-programmed to the KX. You can transfer the Preset Control Template (latest template at the time of downloading the KX Editor) from the KX Editor to the KX.

- 1 Select the "Preset" bank in the Library window.
- 2 Click [OK] in the Bank Data Transfer section (page 9) to transfer the Preset bank to the Current bank, as well as to the KX.



KX Editor Window

The KX Editor consists of two windows: Bank and Library window. The Bank window lets you edit the settings of the selected Control Template while the Library window lets you manage the Banks.

- **Bank window**



1 Always on Top button

Turning this button on () keeps the KX Editor's window always on top.

2 ONLINE indicator

Shows whether the KX Editor and the KX are properly connected via USB (ONLINE status). In the ONLINE status, this indicator lights in green and any operations on the KX Editor automatically change the parameter value on the KX.

3 Bank name

Shows the name of currently selected bank.

4 Library button

Calls up the Library window (page 9).

5 Control Template Selection box

Shows the currently selected Control Template. You can select the previous/next template by clicking the scroll button at the right of this box, or select any template in the current bank by clicking the triangular button.

6 VSTi Select/Input box

Shows the VSTi name which is controlled by the CONTROL knobs. You can change the VSTi by clicking the triangular button then selecting the desired one. You can also input the VSTi name directly in this box manually.



If the desired VSTi is not shown even when you click the triangular button, refer to the Troubleshooting section on page 12.

7 Edit section

The knobs illustrated here correspond to the CONTROL knobs on the front panel of the KX. Here, you can assign the desired function to each of the CONTROL knobs.

7-1 Remote/CC buttons

Equivalent to the Knob Out Select parameter of the KX. When Remote is selected, using the CONTROL knobs generates the Remote Control messages exclusive for Cubase. When CC is selected, using the CONTROL knobs generates the Control Change messages. In the ONLINE status, setting this parameter changes the value of the Knob Out Select parameter of the KX in real time.

7-2 Knob Functions Select button

Equivalent to the Knob Functions Select button on the front panel of the KX.

7-3 Function Assignment boxes

The knobs illustrated here are equivalent to the CONTROL knobs on the KX. Each of the boxes below the knobs shows the function assigned to the corresponding knob. (The function shown here differs depending on the Remote/CC button status.)

You can change the function assigned to each of the knobs by clicking a desired box, then selecting the desired function in the 8 Controller Setting section. When in the ONLINE status, the settings here will be applied to the KX in real time.

8 Controller Setting section

Determines the function of the knob selected in the 7 Edit section. There are two sections here: Remote section and CC (Control Change) section.

8-1 Remote section

Assigns the function to the Function Assignment box selected in the 7 Edit section. The setting here is available when the Knob Out Select parameter is set to "Remote." Clicking "Remote" at the left of this section also sets the Knob Out Select parameter of the KX to "Remote."

Control Parameter

Click the triangular button to call up the menu, then select the desired function.

NOTE • The "QuickCtrl1" – "QuickCtrl8" parameters only apply to Cubase 4.1 or later.

8-2 CC (Control Change) section

Assigns the function to the Function Assignment box selected in the (6) Edit section. The setting here is available when the Knob Out Select parameter is set to "CC." Clicking "CC" at the left of this section also sets the Knob Out Select parameter of the KX to "CC."

CC Number (Control Change Number)

Selects the Control Change number by clicking one of the scroll buttons at the right of this box.

Display Name

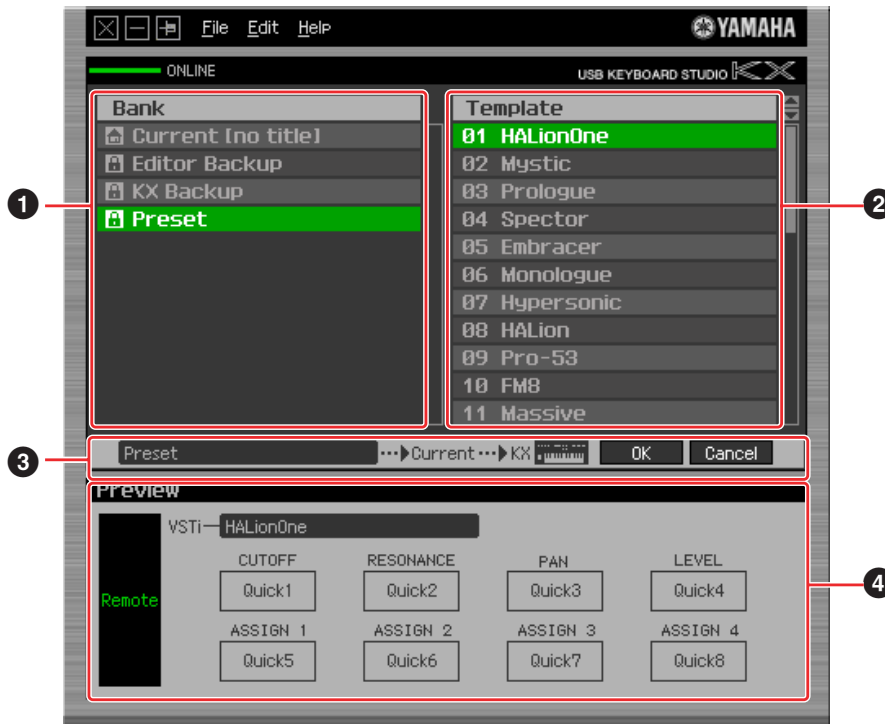
Selects the knob function's name shown on the KX's Top display (which appears when the power of the KX is turned on). Click the triangular button at the right of this box, then select the desired one. You can also input the name directly.

Display Format

Sets the value format shown on the display of the KX to "0 – 127" or "-64 – +63."

- **Library window**

Clicking the Library button on the Bank window opens the Library window.



- **1 Bank list**

Shows the banks. Select the bank you want to edit. Clicking [OK] at the Bank Data Transfer section transfers the settings to the Current Bank and enables editing. You can also create your original bank from scratch by selecting [File] → [New Bank]. Note that the Banks listed below are pre-programmed and cannot be overwritten.

- **Editor Backup**

When you transfer a bank to the current bank without saving the previously edited bank, the bank you are editing (and have not yet saved) will be backed up to this Editor Backup bank.

- **KX Backup**

When you start the KX Editor, the Control Templates on the KX are transferred to the current bank on KX Editor and are backed up to this KX Backup bank simultaneously. If you want to recall the original (un-edited) Control Template after editing the template, use this bank.

NOTE The data in Editor Backup and KX Backup banks will be lost when you quit the KX Editor. To avoid this, select [File] → [Duplicate] to save the bank before quitting the application (page 10).

- **Preset**

Contains the 30 Control Templates. See page 6.

- **2 Control Template list**

Shows the Control Templates in the selected bank. Select the Control Template to be edited. You can view the contents of the selected Control Template in the 4 Preview section.

- **3 Bank Data Transfer Section**

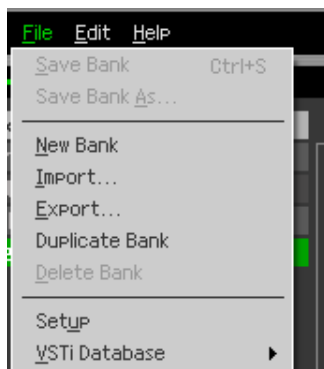
Clicking [OK] transfers the bank selected in 1 Bank list and calls up the Bank window. If the status is ONLINE, the selected bank is also transferred to the KX. Clicking [Cancel] calls up the Bank window without transferring any data.

- **4 Preview**

Shows the settings of the selected Control Template.

Menu

- **[File] menu**



Save Bank

Saves the current settings by overwriting the Bank you called up when starting your editing session. This menu is available when the Bank window is shown.

Save Bank As

Saves the current settings as a Bank with a new name. This menu is available when the Bank window is shown.

New Bank

Creates and opens a new Bank file containing the default setup. This menu is available when the Library window is shown.

Import

Imports data of a single Bank including the 30 Control Templates from a file (extension: .xml) to the Library. This menu is available when the Library window is shown. After the Import operation is completed, you can confirm that the new Bank has been imported in the Bank list.

Export

Exports data of the Bank specified in the Library window to a computer file (extension: .xml). This menu is available when the Library window is shown.

Duplicate Bank

Duplicates the selected Bank. This menu is available when the Library window is shown.

Delete Bank

Deletes the selected Bank. This menu is available when the Library window is shown.

Setup

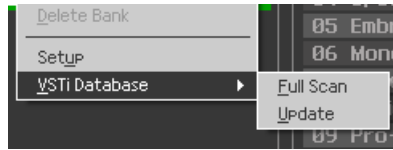
Selects the MIDI port of the KX and the DAW software. Selecting this menu calls up the following window. Set the parameters as necessary, then click [OK].



- **MIDI Port**
“Yamaha KX” is automatically selected when the KX and the computer are connected properly via USB.
- **DAW Select**
Specify the DAW software you are currently using here.

VSTi Database

Scans through the DAW software you are using and obtains the VSTi-related information necessary for editing. This menu consists of the following two menus.



Selecting “Full Scan” scans the entire DAW software. When you scan the DAW for the first time, select “Full Scan.”

Selecting “Update” scans only the sections that have been updated since previous scanning. When you’ve installed a new VSTi, select “Update.”

The “Full Scan” is automatically executed when you start the KX Editor the first time or you change the DAW Select settings in the Setup window. Update is automatically executed when you start the KX Editor the second or subsequent times.

- **[Edit] menu**



Copy

Copies the selected data to the clipboard.

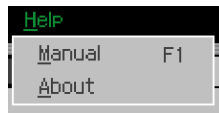
Paste

Pastes the data on the clipboard to the specified location.

Initialize Template

Resets all settings of all the Control Templates in the Current Bank to the initial default values. This menu is available when the Bank window is shown.

- **[Help] menu**



Manual

Selecting this menu calls up this manual in PDF format.

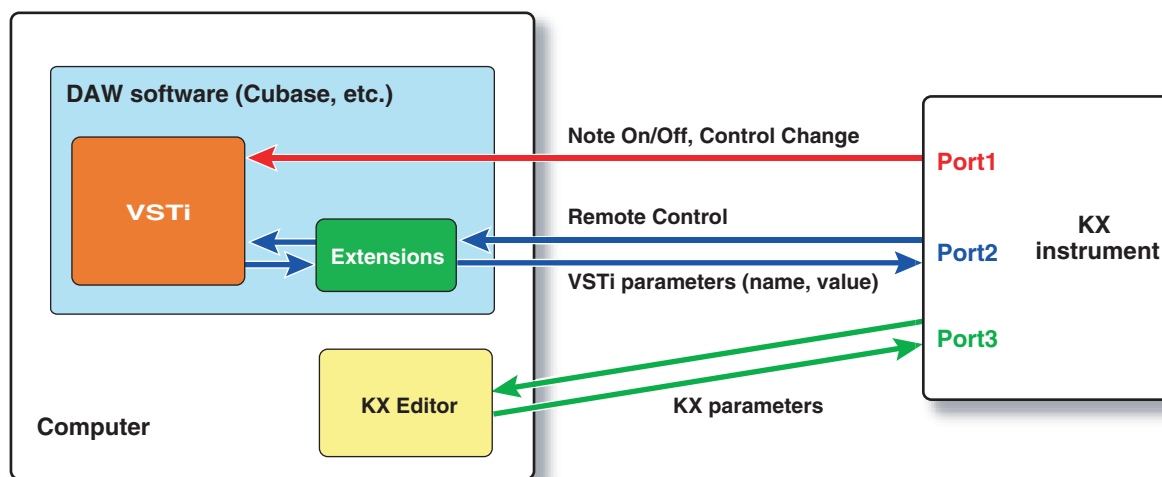
About

Selecting this menu calls up information on the KX Editor, including the version number.

Troubleshooting

- **Even when I click the triangular button at the right of VSTi Select/Input box in the Bank window, the VSTi plug-ins registered to the DAW software are not shown as expected.**
 - The KX Editor may not properly recognize the VSTi registered in the DAW software. Select [File] → [VSTi Database] → [Full Scan] to search the VSTi information (page 11).
- **The parameters set on the KX Editor are not displayed on the KX.**
 - The display on the KX is based on the information sent from Cubase (see the illustration above). Start Cubase and select the corresponding VSTi within Cubase.
- **Even when I change the VSTi on the DAW software such as Cubase, the Control Template on the KX does not change corresponding to the newly selected VSTi.**
 - The Control Template on the KX may not correspond properly with the latest version of your VSTi. Transfer the Preset Control Template (page 6) or one of the templates you have created on the KX Editor to the KX.
 - The VSTi-related information is obtained through the Extension software (see the illustration below). Make sure that the latest DAW Extension is installed.
 - Make sure that the VSTi name displayed on the DAW software is the same as the one shown in the VSTi Select/Input box (page 7).

Data transfer between the KX Editor, KX and DAW software:



- **Turning the CONTROL knobs on the KX affects Remote parameters other than those intended for control.**
 - In Cubase, remove the checkmarks of "ALL MIDI Inputs" corresponding to MIDI ports 2 and 3. For details, refer to the KX Owner's Manual on page 18.
- **Even when I click the triangular button at the right of Control Parameter in the Bank window, the appropriate Control Parameters are not shown.**
 - Make sure that the VSTi is correctly selected in the VSTi Select/Input box (page 7). If you have input the VSTi name directly, make sure that the spelling is correct and the placement of spaces (if any) is correct. We recommend that you select the VSTi by clicking the triangular button at the right of VSTi Select/Input box, instead of inputting the VSTi name directly.
- **On the DAW software other than Cubase, the set parameters are not controlled.**
 - The Remote control functions are available only for Cubase. Set the Remote/CC buttons (page 8) to "CC."
- **Even when I select another track on the DAW software, the VSTi to be controlled does not change; instead, the VSTi which is assigned to the previously selected track remains under control.**
 - On the DAW's Preferences dialog, select [Editing]-[Project & Mixer], then checkmark both "Sync Project and Mixer Selection" and "Enable Record on Selected Track."
- **How can I control Audio tracks or MIDI tracks?**
 - By selecting "MIDI Track" in the VSTi Select/Input box (page 7), you can control the Volume, Pan and Quick Control parameters.
- **The VSTi used for MIDI track cannot be controlled.**
 - The VSTi used for MIDI track cannot be directly controlled from the KX. By selecting "MIDI Track" in the VSTi Select/Input box (page 7), you can control the Volume, Pan and Quick Control parameters.