

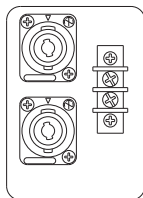
Installation Series

Speaker System



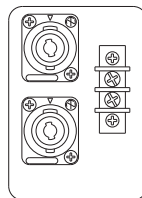
IF2208

**IF2208
Rear Panel**



IF2108

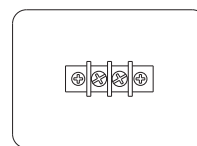
**IF2108
Rear Panel**



IF2205



IF2205 Rear Panel



Compact two-way full-range models with 8-inch or 5-inch woofers install easily in tight situations.

IF2208 & IF2108

- Sound and phase characteristics matched with all other Installation Series models.
- Single 8" woofer (IF2108) or dual 8" woofers (IF2208) plus 1.7" high-frequency compression driver with 1" exit.
- 90° x 60° dispersion pattern.
- Multi-angle cabinet design enables floor monitor applications.
- Horn can be rotated 90-degrees, allowing vertical or horizontal mounting.
- Eleven 10mm-screw (M10) and six 8mm-screw (M8) suspension points provided for flexible rigging.
- Durable black or white finish (can be painted to match any interior).
- Optional matching U-bracket available.
- Parallel-wired two Neutrik NL4 and barrier strip connectors.
- Pole socket* featured for easy pole mounting.

**Warning when using the pole socket*

*Make sure that the pole is mounted vertically when you mount the speaker to the pole.
Please refer to the Owner's Manual for details.*

IF2205

- Sound and phase characteristics matched with all other Installation Series models.
- Dual 5" woofers plus 1" high-frequency compression driver with 1" exit.
- 90° x 60° dispersion pattern.
- Horn can be rotated 90-degrees, allowing vertical or horizontal mounting.
- Six 8mm-screw (M8) and two 6mm-screw (M6) suspension points provided for flexible rigging.
- Durable black or white finish (can be painted to match any interior).
- Matching U-bracket available as an option.
- Barrier strip connectors.

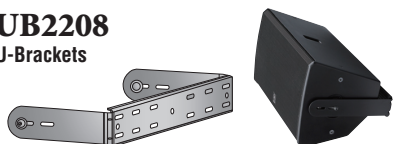
OPTIONS

Accessories

Durable black or white finish as well as Installation series speaker, which can be painted to match any interior.

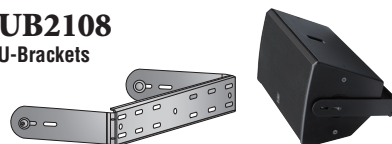
UB2208

U-Brackets



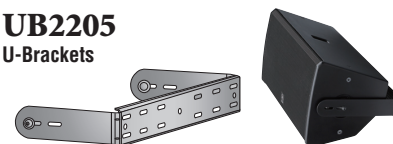
UB2108

U-Brackets



UB2205

U-Brackets



BCS251

Ceiling-Brackets



BWS251-300/400

Wall-Brackets



BBS251

Baton-Brackets



Download the Rigging Guide from Yamaha's website for rigging details:
<http://www.yamahaproaudio.com/>

Installation Series

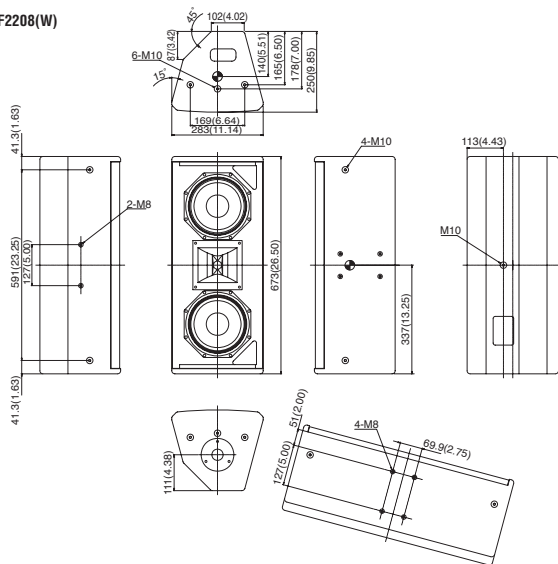
GENERAL SPECIFICATIONS

| Model | IF2208 (W) | IF2108 (W) | IF2205 (W) |
|--|--|---|---|
| Nominal coverage @-6dB (Horizontal x Vertical) | 90 x 60 (rotatable) | | |
| Nominal impedance | 8Ω | | |
| Power rating ^{*1} | NOISE | 200W | 100W |
| | PGM | 400W | 200W |
| | MAX | 800W | 400W |
| Sensitivity (1W, 1m) | 95dB SPL | | 89dB SPL |
| Continuous SPL (calculated) | 118dB SPL | | 109dB SPL |
| Peak SPL (calculated) | 124dB SPL | | 115dB SPL |
| Components | LF | 2 x 8" woofer 2" voice coil | 2x 5" woofer 1" voice coil |
| | HF | Rotatable constant directivity horn, 1" exit, 1.7" voice coil compression driver | Rotatable constant directivity horn, 1" exit, 1" voice coil compression driver |
| Frequency range (-10dB) ^{*2} | 55Hz-19kHz | | 65Hz-19kHz |
| Passive Crossover Frequency ^{*3} | 1.4kHz | | 1.7kHz |
| Connectors | 2 x NL4 and barrier strip, wired in parallel | | Barrier strip |
| Shape | Multi-angle wedge | | Rectangular |
| Dimensions (W x H x D) | 283 x 673 x 250mm (11.1" x 26.5" x 9.8") | 283 x 448 x 250mm (11.1" x 17.6" x 9.8") | 457 x 146 x 226mm (18.0" x 5.8" x 8.9") |
| Weight | 19.0kg (42.0lbs) | 14.0kg (31.0lbs) | 7.5kg (17.0lbs) |
| Flying hardware | 11 x M10, 6 x M8 | | 6 x M8, 2 x M6 |
| Optional accessories | UB2208(W) | UB2108(W) | UB2205(W) |
| 3rd Party Accessories | Omnimount (US) | 60.0 series | 20.5 series |
| | Multimount (US, Allen products) | 020, 022 series | 080 series |
| | Powerdrive (UK) | 100 series | 75 series |
| | Ohashi (Japan) | SPH-140, SPA-140, BCH-140 series | SPH-140, SPA-140, BCH-140 series |

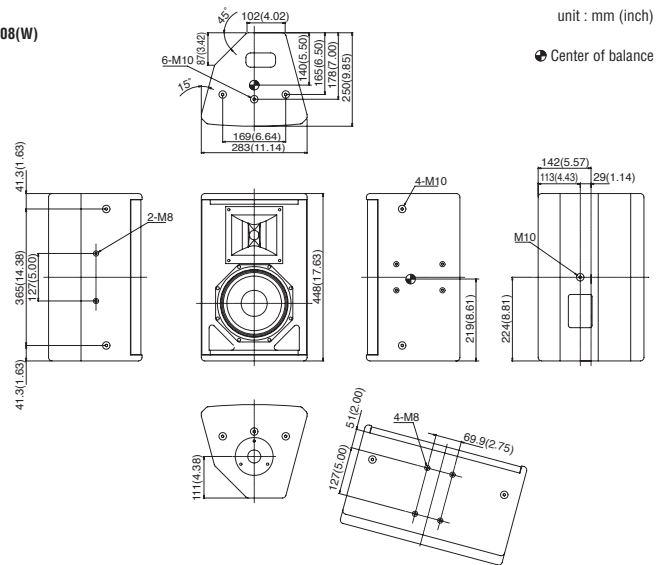
*1 2 hours, IEC *2 Yamaha recommended DSP configuration, full-space *3 At this frequency, the transducers produce equal sound pressure levels.

DIMENSIONS

IF2208(W)



IF2108(W)



unit : mm (inch)

● Center of balance

IF2205(W)

